



Rental & Pre-Designed Double Decks Catalog

Last Updated: 04-03-2024

Pricing subject to change without notice

3DL Design, Inc.
262.842.0530
www.3dl.design

Randall Harju | President
rharju@3dl.design

Our Company

- Company Founded in 1985
- Privately Held Corporation
- Award-Winning Trade Show Exhibits
- Headquartered in Gurnee, IL
- Logistics in All the Major Show Hall Destination Cities
- Nationwide Custom Rentals
- Global Service Team

Design & Fabrication

- Large Format Digital Printing
- Backlit Graphics
- Dimensional Letters & Elements
- Vinyl Graphics
- Retail Signage & Banners
- Scenic Props
- CNC Technology
- Cabinetry / Millwork / Custom Acrylic

Marketing Programs

- Modular & Portable Display Systems
- Event-Marketing Technologies
- International Exhibit Management
- Special Event Production



WELCOME TO **3DL DESIGN**

Pleasure to meet you.



DD-1 WOOD DECK

RENTAL:
STARTS AT \$10,000*

(Discounts available for multi-show / multi-year commitment)

PURCHASE:
STARTS AT \$120,000*

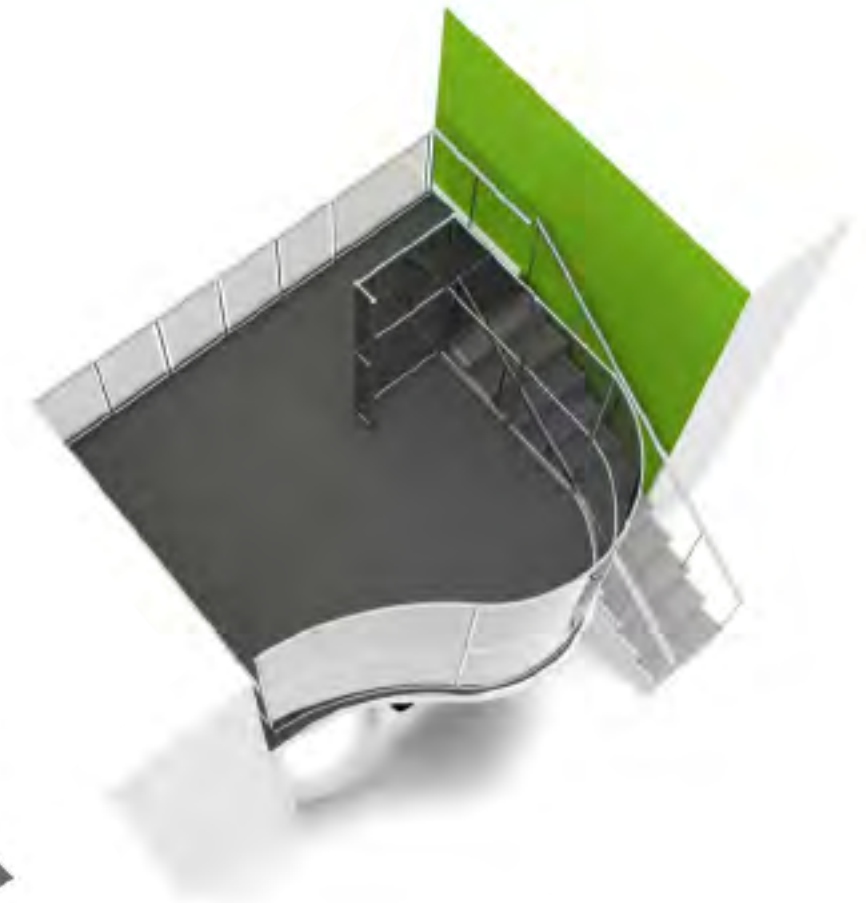
*Rental price is for deck only. Price does not include rebranding, flooring, furniture, freight or show services. Options available for upper deck plexi panels.

Financing options available for purchase (not available for rental)

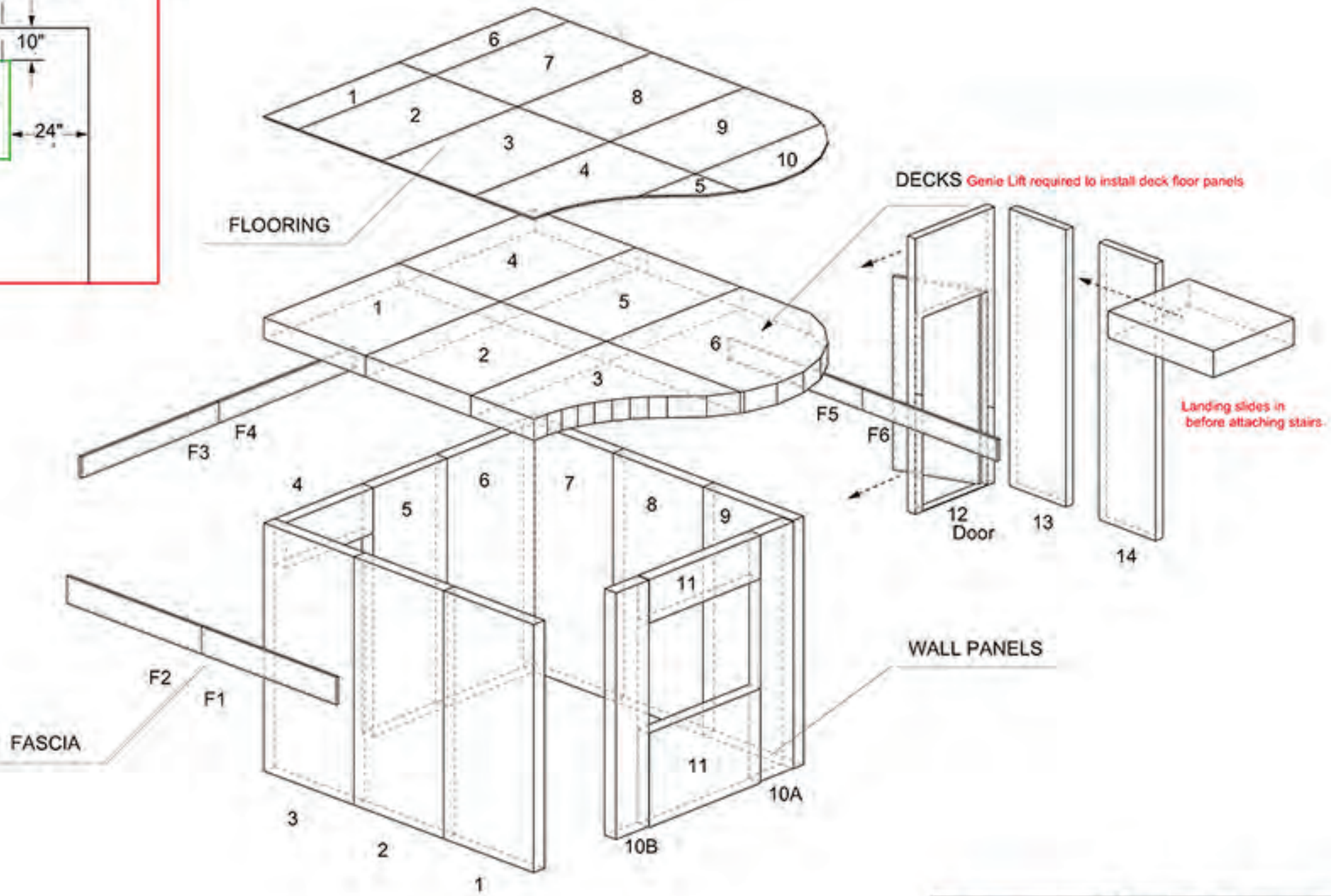
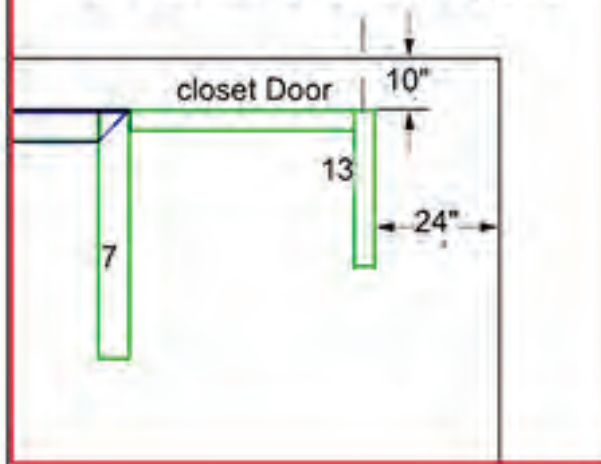


45-60 day lead time

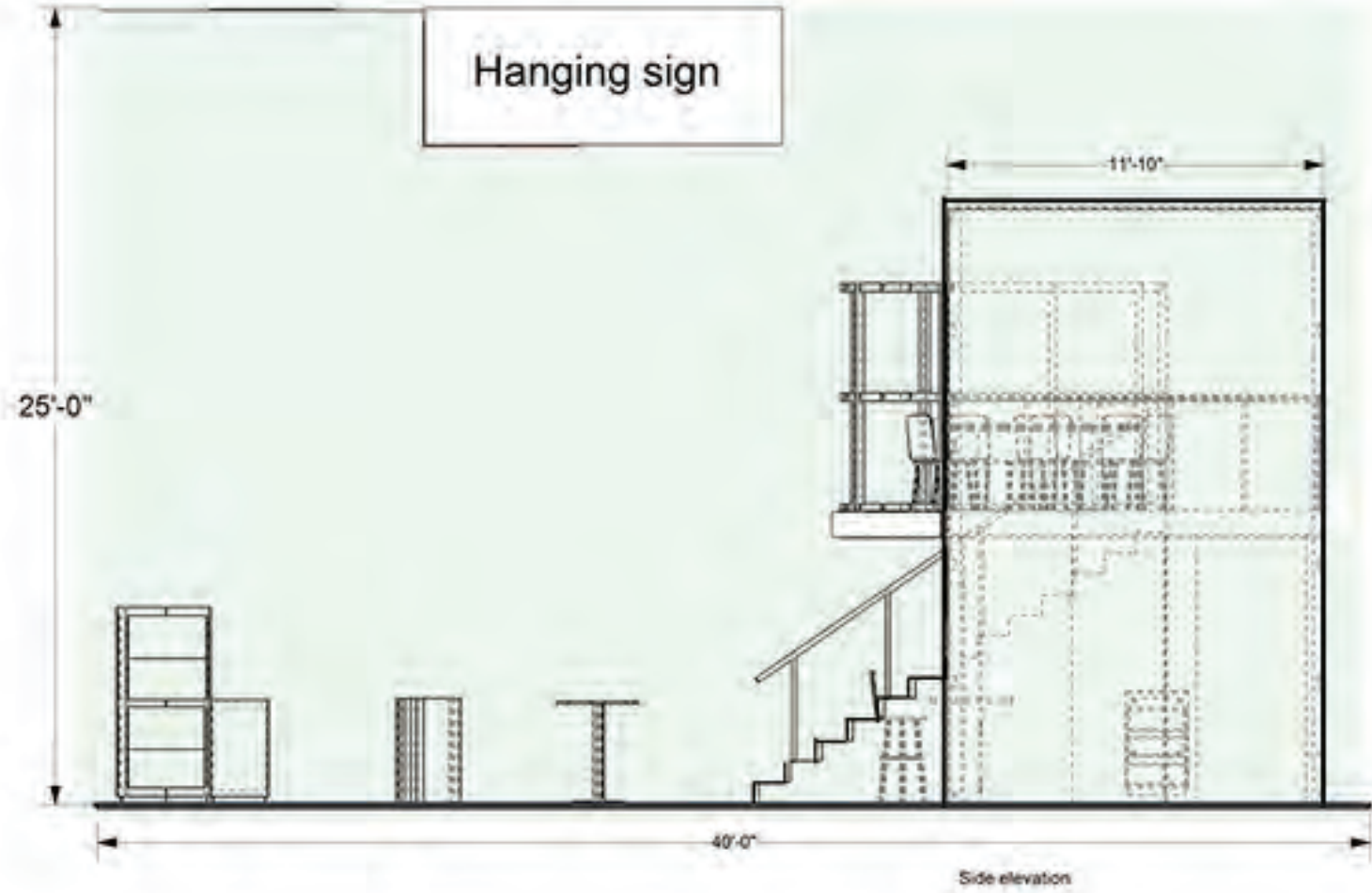
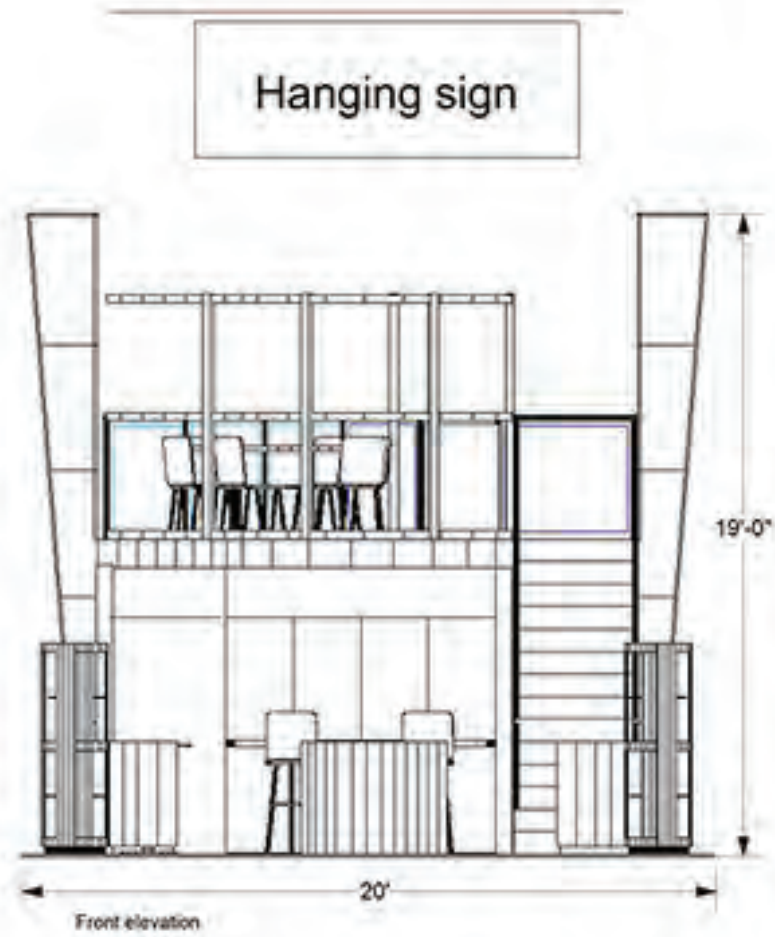
DD-1 WOOD DECK



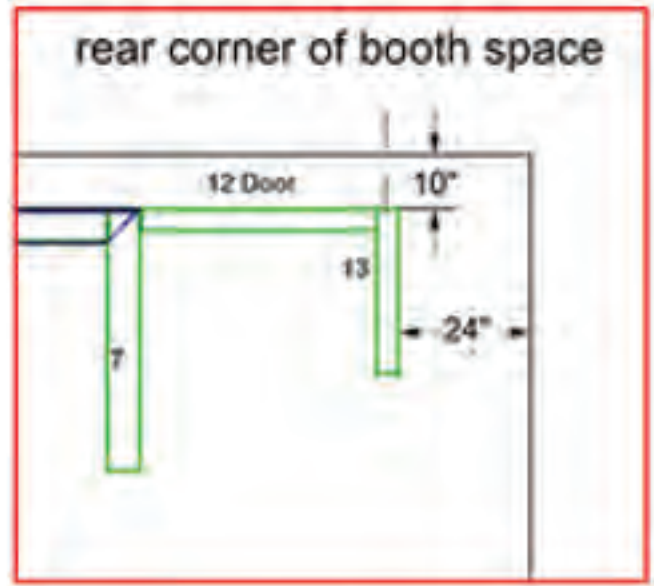
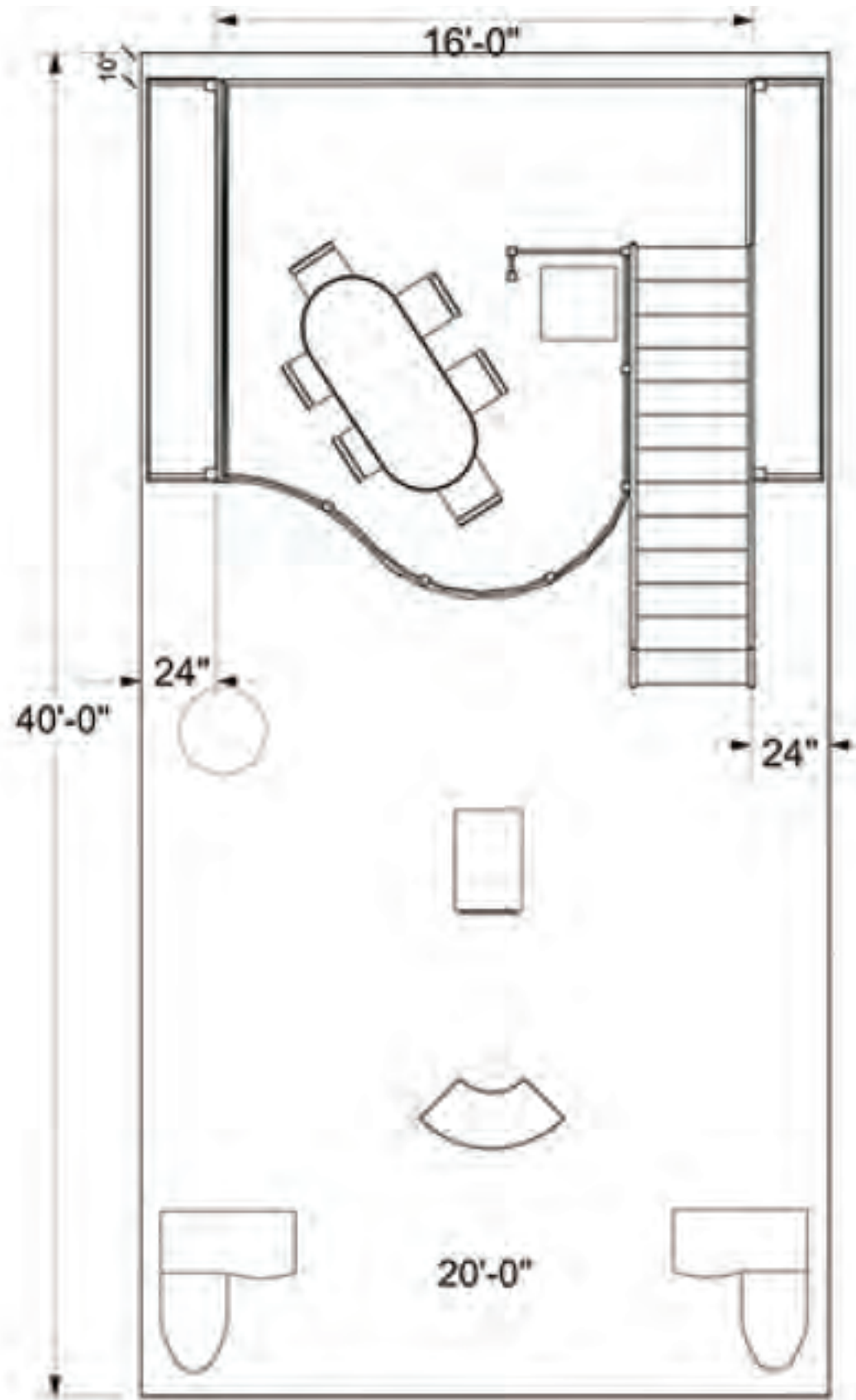
rear corner of booth space



	3DL Design, Inc. 10000 E. 10th Ave. Suite 100 Denver, CO 80231	JOB TITLE: DATE REVISED: 4/20/14	CONFIDENTIAL: This design embodies confidential and proprietary information of 3DL Design, Inc. and should not be disclosed without the express written consent of 3DL Design, Inc.
	DRAWING TITLE:	NONE	
	Page:	5	
	Page		



	3DL design	3DL Design, Inc. 1000 N. LaSalle St. Suite 1000 Chicago, IL 60610	DATE REVISED: JUNE 2014 DRAWING TITLE:	SCALE:	CONFIDENTIAL This design embodies confidential and proprietary information of 3DL Design, Inc. and should not be disclosed, copied, or used for the benefit of any other party without the express written consent of 3DL Design, Inc.
	Page				





DD-2 ALUMINUM DECK

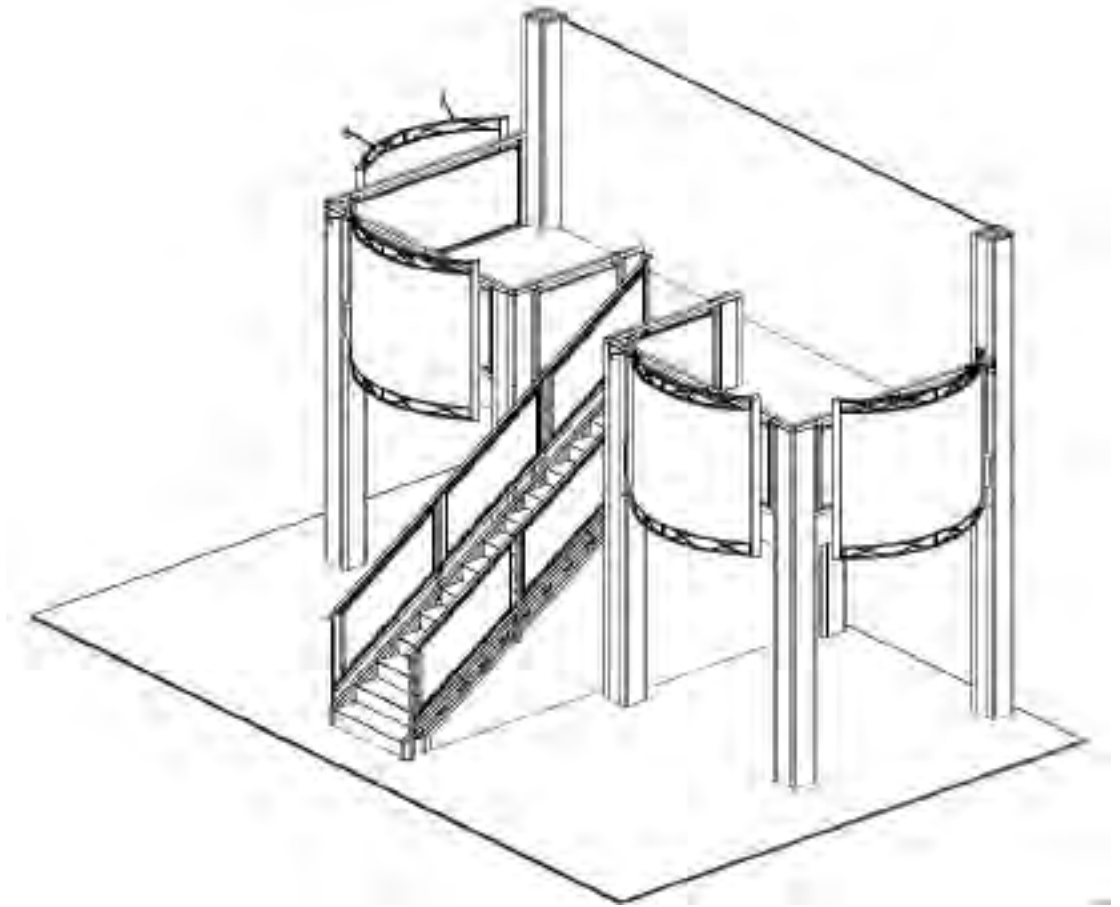
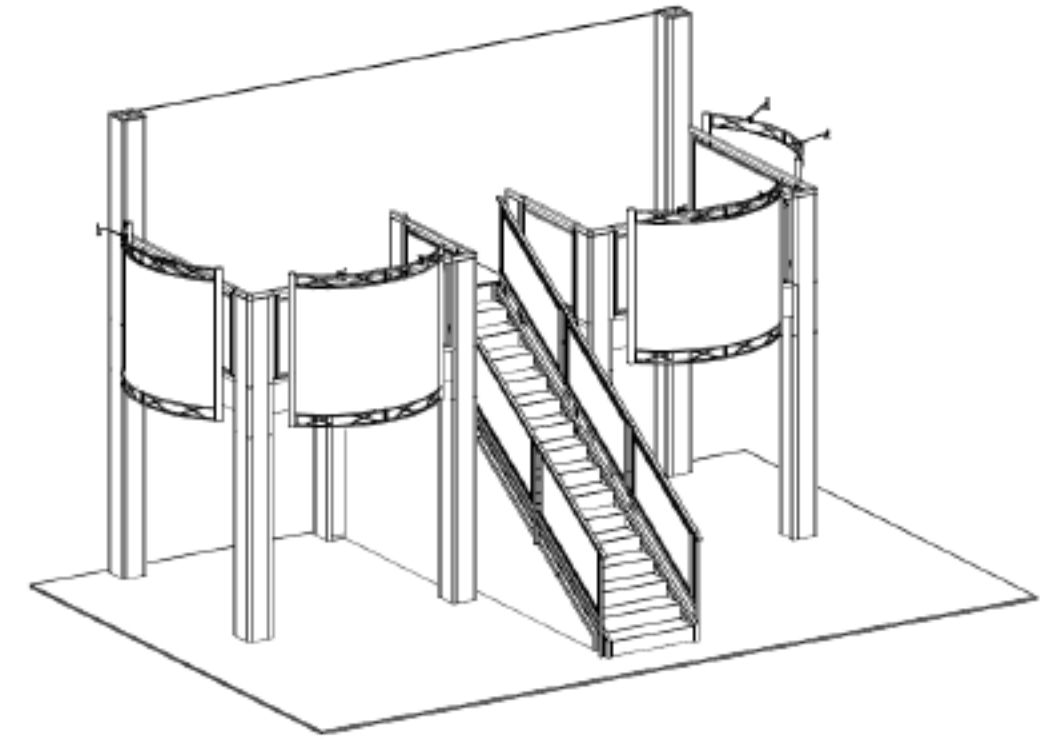
RENTAL:
STARTS AT \$40,300

(Discounts available for multi-show / multi-year
commitment)

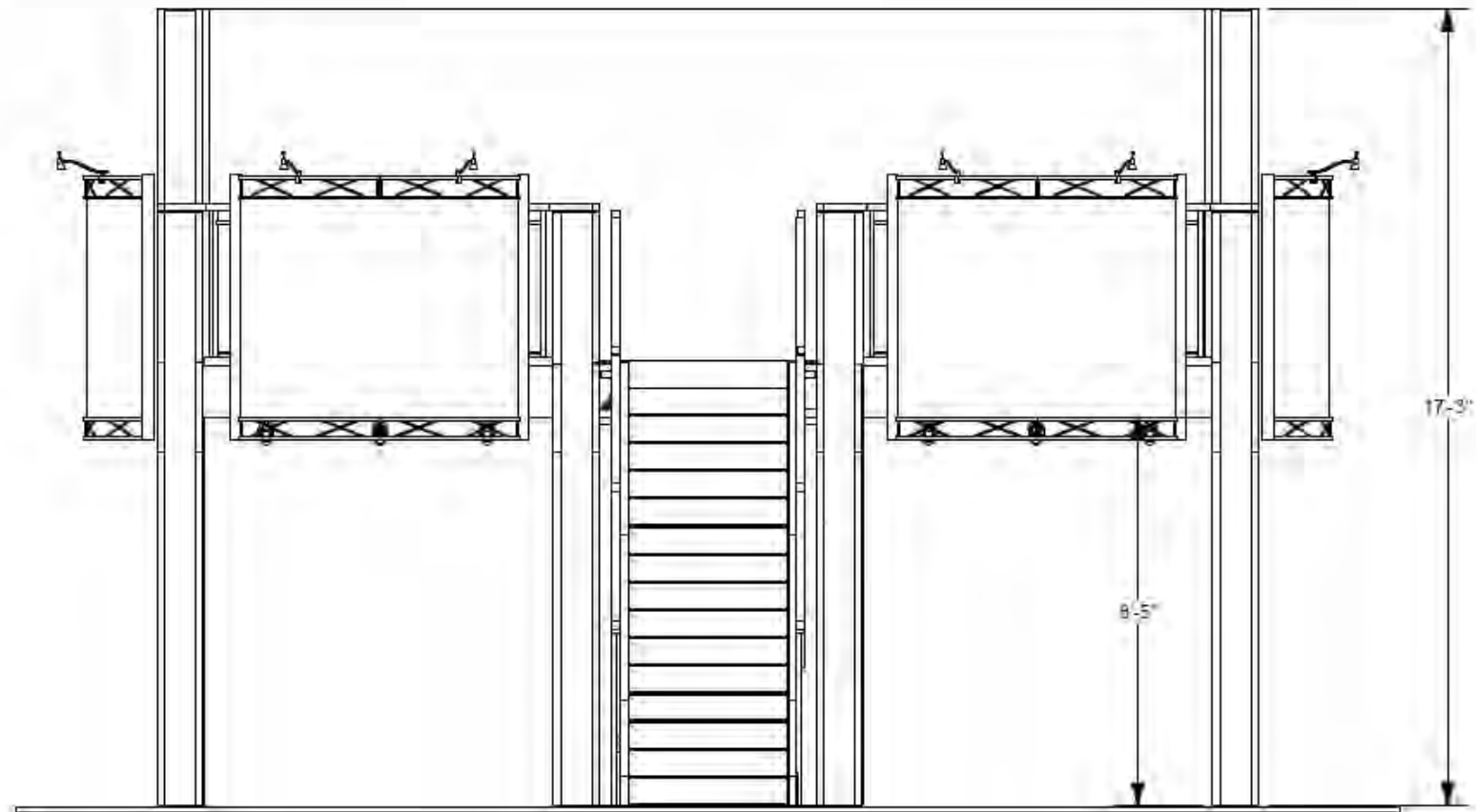
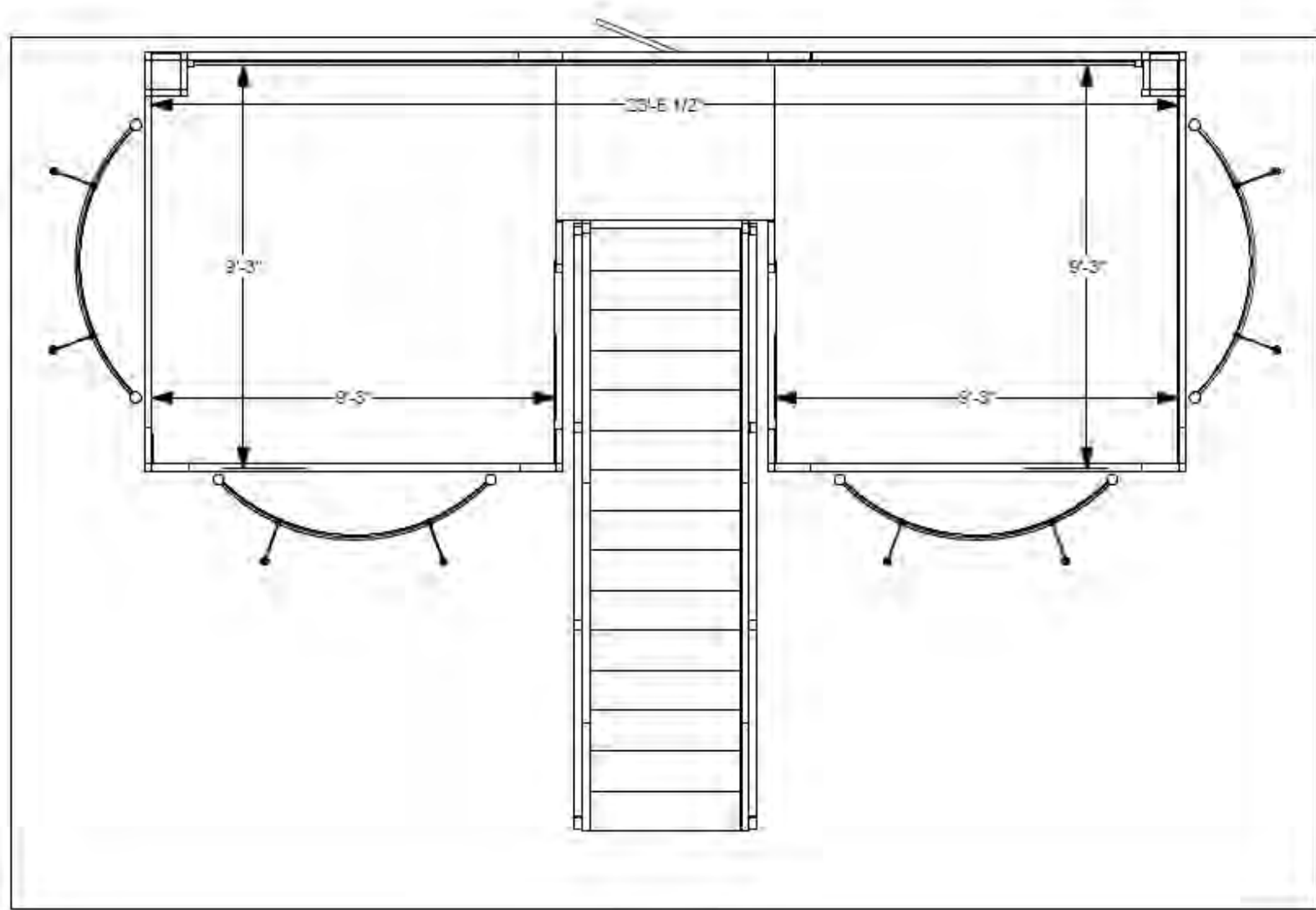
COMPLETE
GRAPHICS PACKAGE:
STARTS AT \$17,000

PURCHASE:
STARTS AT \$110,000

Financing options available for purchase
(not available for rental)



DD-2 ALUMINUM DECK



DD-3 MIXED MATERIALS

RENTAL:
STARTS AT \$34,500*

GRAPHICS:
INCLUDED AS PER
VISUAL

NOTES:

*Includes some freight and show services

*based on availability

Financing options available for purchase
(not available for rental)

45-60 day lead time



DD-4 MIXED MATERIALS

RENTAL:
STARTS AT \$37,000*

GRAPHICS:
(3) HEADERS INCLUDED AS PER VISUAL

NOTES:
*Includes round-trip freight and carpenter installation/
dismantle in most major markets
Approximate weight is 5,500 lbs.

*based on availability

Financing options available for purchase
(not available for rental)

45-60 day lead time



DD-5

MIXED MATERIALS

RENTAL:
STARTS AT \$33,580*

GRAPHICS:
(3) HEADERS INCLUDED AS PER VISUAL

NOTES:
*Includes round-trip freight and carpenter
installation/dismantle in most major markets
Approximate weight is TBD.

*based on availability

Financing options available for purchase
(not available for rental)

45-60 day lead time



DD-6

MIXED MATERIALS

RENTAL:
STARTS AT \$32,525*

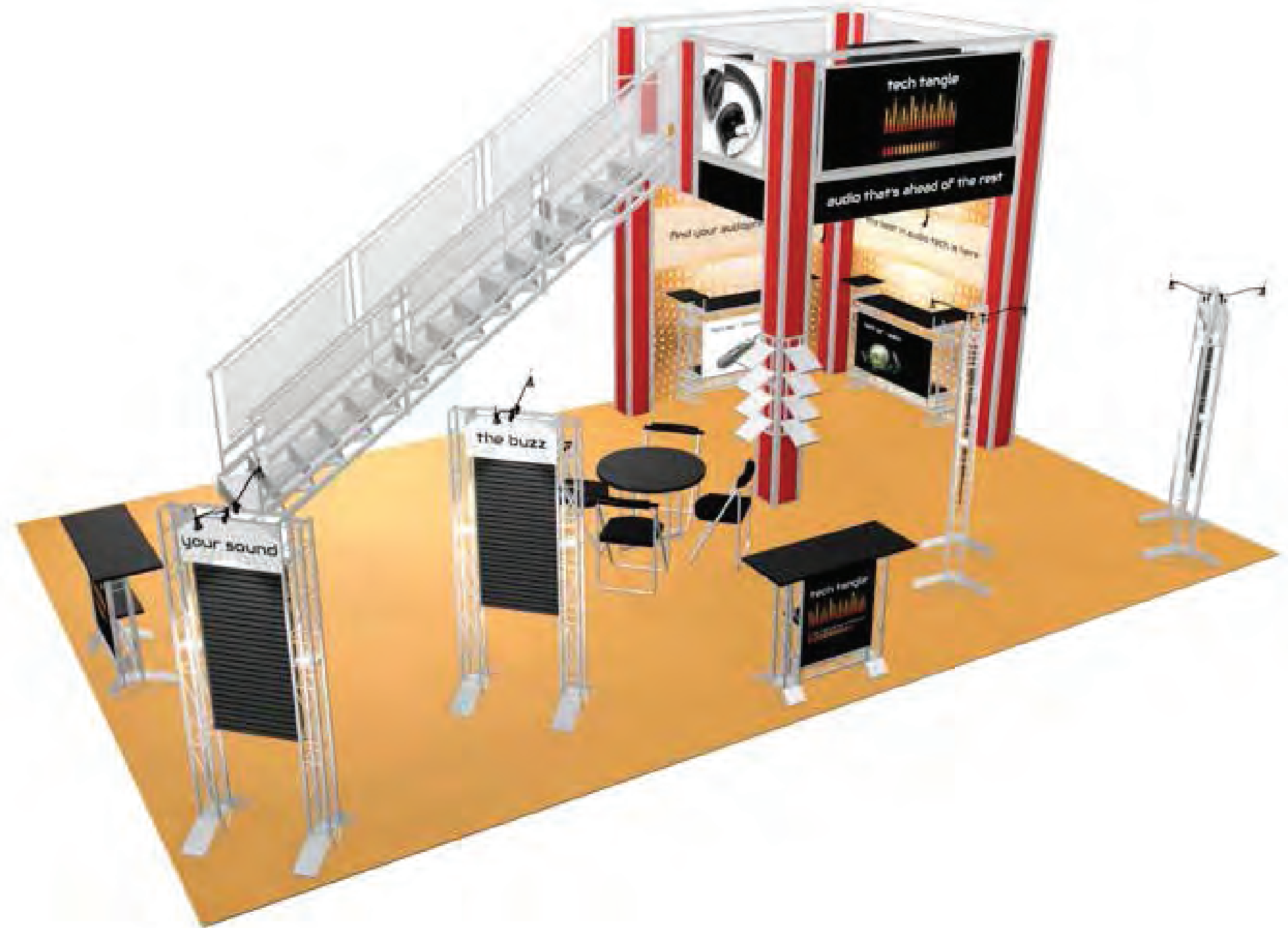
GRAPHICS:
(3) HEADERS INCLUDED AS PER VISUAL

NOTES:
*Includes round-trip freight and carpenter
installation/dismantle in most major markets.
Approximate weight is 4,500lbs.

*based on availability

Financing options available for purchase
(not available for rental)

45-60 day lead time



DD-7

MIXED MATERIALS

RENTAL:
STARTS AT \$56,725*

GRAPHICS:
INCLUDES BASIC GRAPHIC PACKAGE

NOTES:
*Includes round-trip freight and carpenter installation/dismantle in most major markets. Requires a 20' x 30' space. Rental price is for deck and basic graphic package only. Approximate weight is TBD.

*based on availability

Financing options available for purchase
(not available for rental)

60-90 day lead time



DD-8

MIXED MATERIALS

RENTAL:
STARTS AT \$77,700*

GRAPHICS:
INCLUDES BASIC GRAPHIC PACKAGE

NOTES:
*Includes round-trip freight and carpenter installation/dismantle in most major markets. Requires a 30' x 30' space. Rental price is for deck and basic graphic package only. Approximate weight is TBD.

*based on availability

Financing options available for purchase
(not available for rental)

60-90 day lead time



DD-9

Purchase
\$595,000

20' x 50'

Includes:
deck structure, rails, 2 staircases,
support columns, ceiling panels,
connecting hardware, ceiling lights,
shipping crates, engineering stamp,
upstairs and downstairs storage
closets

Does not include flooring, AV or
furniture

6 month lead time



DD-9



Las Vegas Convention & Visitors Authority

Exhibit Hall Booths -- Plan Review Checklist:

Amendments to the Clark County, NV Fire Code and LVCC Building Rules: Clark County, Nevada amended the fire code in September, 2013, including the temporary fire sprinkler code. In addition, the LVCVA amended its building rules to reflect the fire code amendments. These amendments have resulted in significant changes to booth approvals at the LV Convention Center.

Effective immediately for covered booths: The requirement for smoke detectors and fire extinguishers will remain as is: On a case by case basis.

Fire watches are no longer required inside covered booths or decks.

A covered booth or deck will require a temporary sprinkler system if:

1. There is a vehicle displayed in the booth (that has a cover or deck that is 1,000 square feet or larger in area)
2. There are hot works being conducted in the booth
3. There is open flame in the booth
4. The booth will be in place for 7 days or longer

Dimensions: All plans must indicate the dimensions for the booth and structure.

Double Deck Booth Less Than 300 Square Feet (28 Square Meters): Maximum occupancy for a deck with a single staircase is nine (9) persons, which must be posted in plain view near the base of the staircase.

Double Deck Booth 300 Square Feet (28 Square Meters) or larger: Must be equipped two (2) remote staircases, minimum.

Definition of Remote Stairs: The upper landings of remote staircases must be separated by at least one-half (1/2) the distance of the longest measurement of the upper deck, measured diagonally from corner to opposite corner for square or rectangular shaped decks. (Consult with the LVCVA Fire Prevention Office for the remote calculations on irregularly shaped decks.)

Note: Limiting occupancy to nine (9) persons is not an acceptable alternative in lieu of this Life Safety Code requirement for remote staircases.

Engineer Wet Stamp: Booth plans submitted shall be accompanied by an engineer's wet stamp to verify the integrity of the structure, per regional requirements -- or the documentation must be made available for review during onsite inspection of the exhibit on the show floor (indoor, only). Outdoor plans must be reviewed at least 60 days in advance.

Las Vegas Convention & Visitors Authority

Exhibit Hall Booths -- Plan Review Checklist:

Live-Load Rating: Booth plans submitted shall also include the live-load rating for the deck (minimum: 100 psf or 3.50 KN/m²) -- or the documentation must be made available for review during onsite inspection of the exhibit on the show floor.

Fascia / Toe Board: Are required so that loose objects cannot easily fall or be kicked over the edge of the deck onto persons below. Fascia / toe boards must raise four inches (4" / 12.5 cm), minimum, above the outer edge of *decks not having walls*.

Guard Requirements: Minimum height of guard is 42 inches (107 cm). With guard openings up to 34 inches (86 cm), a four inch (4" / 10 cm) sphere must not be able to pass between the rails; above 34 inches (86 cm) an eight inch (8" / 20 cm) sphere must not be able to pass between the rails. Guards must be able to absorb a concentrated load of 200 pounds (91 kilograms), minimum.

Staircase Requirements: Width of staircase is a minimum of 36 inches (91 cm) as measured between the protruding hand rails; staircase landings may not be less than the width of the staircase served; and staircase handrail height is 34(86 cm) to 38" (97 cm) from the nose of the stair or ramp surface.

Spiral Staircases: Are not allowed as ingress/egress pathways – may be used for display purposes, only.

Curved Staircases: Will be evaluated by the Fire Prevention Office on a case-by-case basis.

No Combustible Storage Under Staircases: Unless the under stair area is equipped with a temporary automatic fire sprinkler system, no storage of combustible materials is allowed.

Exception: No sprinklers are required whenever the under stair storage area is completely devoid of any electrical wires or equipment, or such electrical items are separated from the storage area in a manner approved by the Fire Prevention Office.

Fire Extinguisher Requirements for Double Deck Booth: Five-pound (5 lb.) ABC fire extinguishers shall be mounted in plain view, per manufacturer's specs, on the ground level and upper deck level. The actual travel distance from any point within the booth to a mounted fire extinguisher must be no more than 75(23 meters). In-house fire extinguishers may be factored into the distance equation for the ground floor only. At least one (1) fire extinguisher must be provided for each level. Any additional fire extinguishers that are required must be provided by the exhibitor.

Fire Extinguisher Requirements for Covered Booths and Booths Exceeding 299 Square Feet (28 Square Meters): Five-pound (5 lb.) ABC fire extinguishers shall be mounted in plain view, per manufacturer's specs. The actual travel distance from any point within the booth to a mounted fire extinguisher must less than 75'(23 meters).

Las Vegas Convention & Visitors Authority

Exhibit Hall Booths -- Plan Review Checklist:

In-house fire extinguishers may be factored into the distance equation for the ground level, only.

Battery-Operated Smoke Detectors: Must be provided below double-decks and inside any fully-enclosed rooms or closets. (Mounted per manufacturer's specs)

Certificate of Flame Retardancy: Required for all fabrics, decorations and other applicable materials. Certificates must be made available during onsite inspection(s). Field-testing, per code specifications, may be approved in lieu of a certificate. Onsite application of the required retardant may also be approved through a final field-test.

18 Inch Separation Between Booths: Each booth must grant a minimum of nine inches (9" / 23 cm) easement (only at the applicable side(s) of the booth – usually the back – or where the resident contractor supplied electrical lines are routed) to accommodate access to show electrical service. This easement must be totally clear of miscellaneous objects and all combustible storage. *Not* required for in-booth branch lines.

No Combustible Storage Allowed: Behind booths or on or near electrical cords and appliances.

Linear Halogen Lighting Prohibited: Linear halogen bulbs (including uncovered MR 11/MR16, line voltage and low voltage bi-pin bulbs) on LVCVA premises have been prohibited since January 1, 2003. *Please refer to LVCVA Halogen Lighting Policy for addition information (Building Users Manual).*

Final Approval of Booth Plan: As always, final approval is contingent upon a routine inspection(s) of the exhibit area by members of the LVCVA Fire Prevention Office.

Plan Review Deadline: All indoor exhibit plans must be submitted to our office for review not less than 30 days prior to the event opening date.

Outdoor Structures: In addition to the above requirements, outdoor exhibits must also comply with the wind and seismic loading requirements found in the local building code. The engineer must provide verification, via information provided on the stamped plan, that a structure meets or exceeds the minimums required by the locally adopted code.

Note: *Approved plans that have later been revised must be resubmitted to the LVCVA Fire Prevention Office for review and re-approval.*